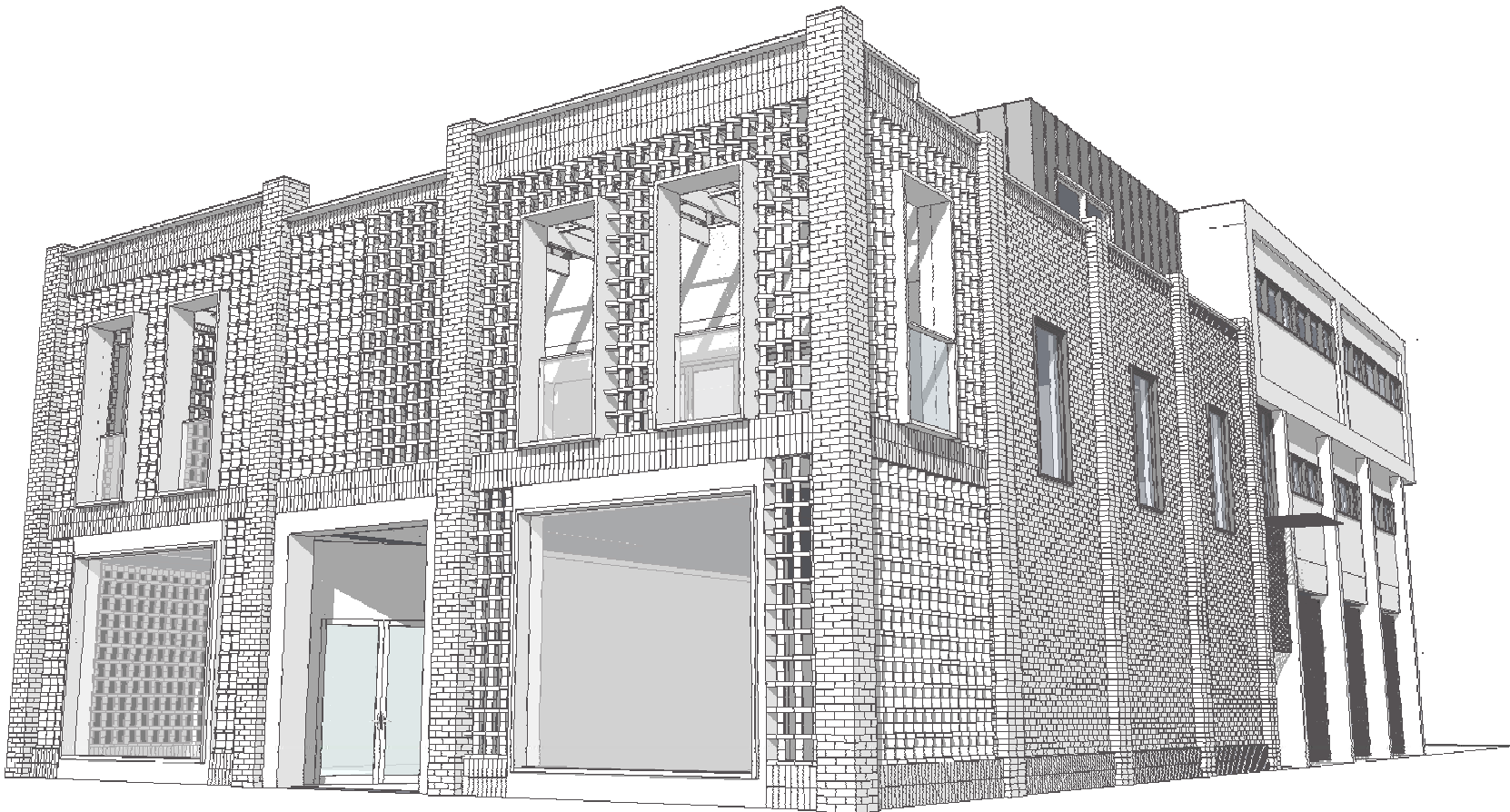


Sheet List	
Sheet Number	Sheet Name
A100	Cover
A101	Site Images
A102	Site Conditions
A103.1	Shadow Diagrams
A103.2	Sightline Diagram
A104	Ground Floor Plan
A105	First Floor Plan
A106	Second Floor Plan
A107	Elevations
A108	Elevations
A109	Street Views
A110	Street Views
A111	Perspectives



RETAIL AND APARTMENT DEVELOPMENT  
122-126 FOSTER STREET, SALE, VIC  
RAL CONSTRUCTIONS

No.	Description	Date	<div><div>JBA</div><div>John Briggs Architects and Heritage Consultant</div><div>331A Bay Street, Port Melbourne</div><div>Phone 9681 9924      Mobile 0411 228 515</div><div>Fax 9681 9923</div></div>	<div>122-126 Foster Street</div> <div>TOWN PLANNING</div>	Cover				<div>COPY RIGHT</div> <div>The concepts and information contained in this document are the intellectual property of John Briggs Architects Pty Ltd. Use or copying of the document, or application of the concepts, in whole or part without written permission of JBA constitutes an infringement of copyright.</div>	
					Project Status		A100			
					Date	Issue Date				
					Drawn by	Author		Checked by		Checker
					Sheet	of		Scale		Revision

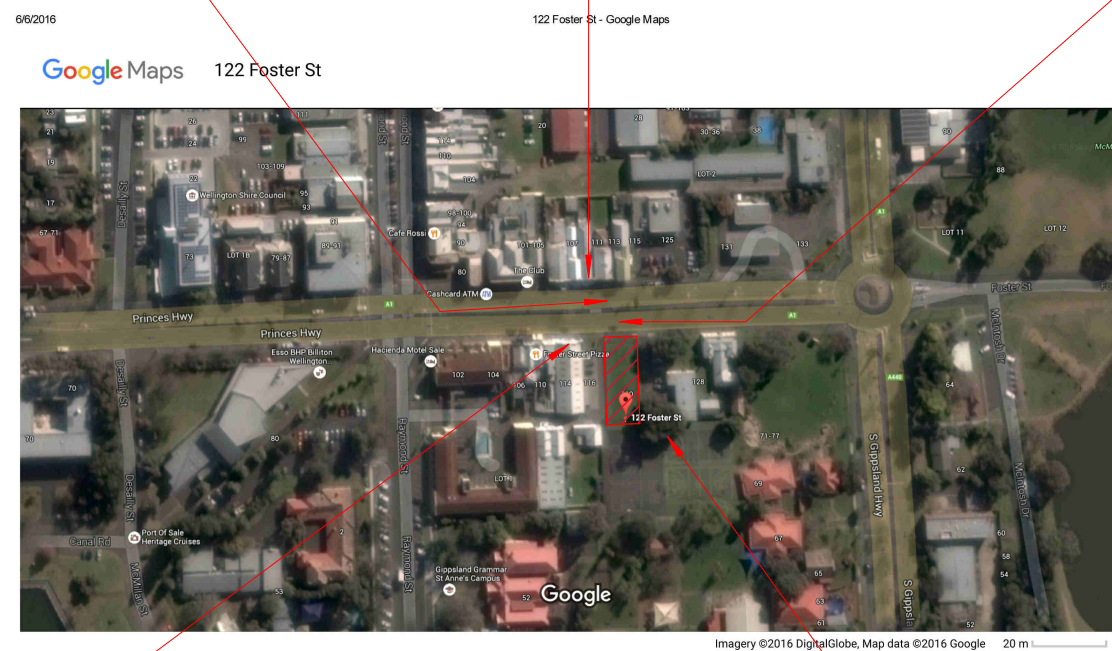




### Street View 1

- Street View 2

### Street View 3



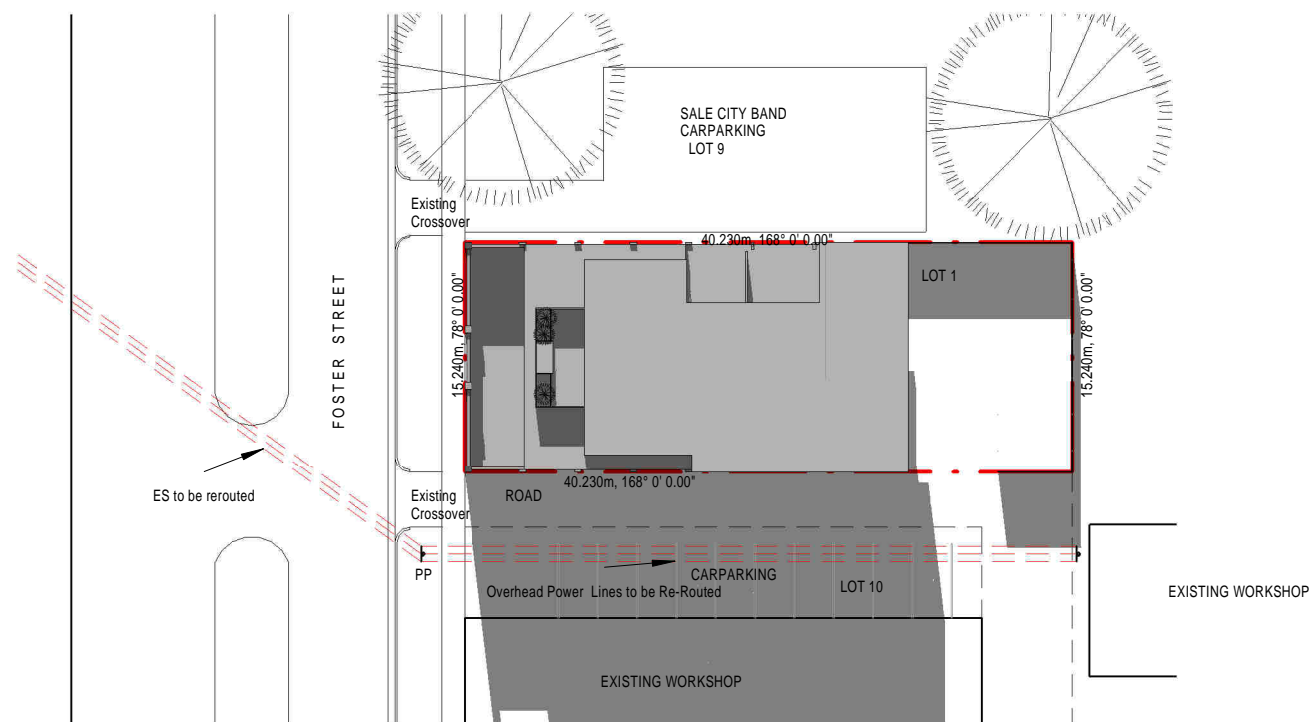
### Street View 4

- Street View 5

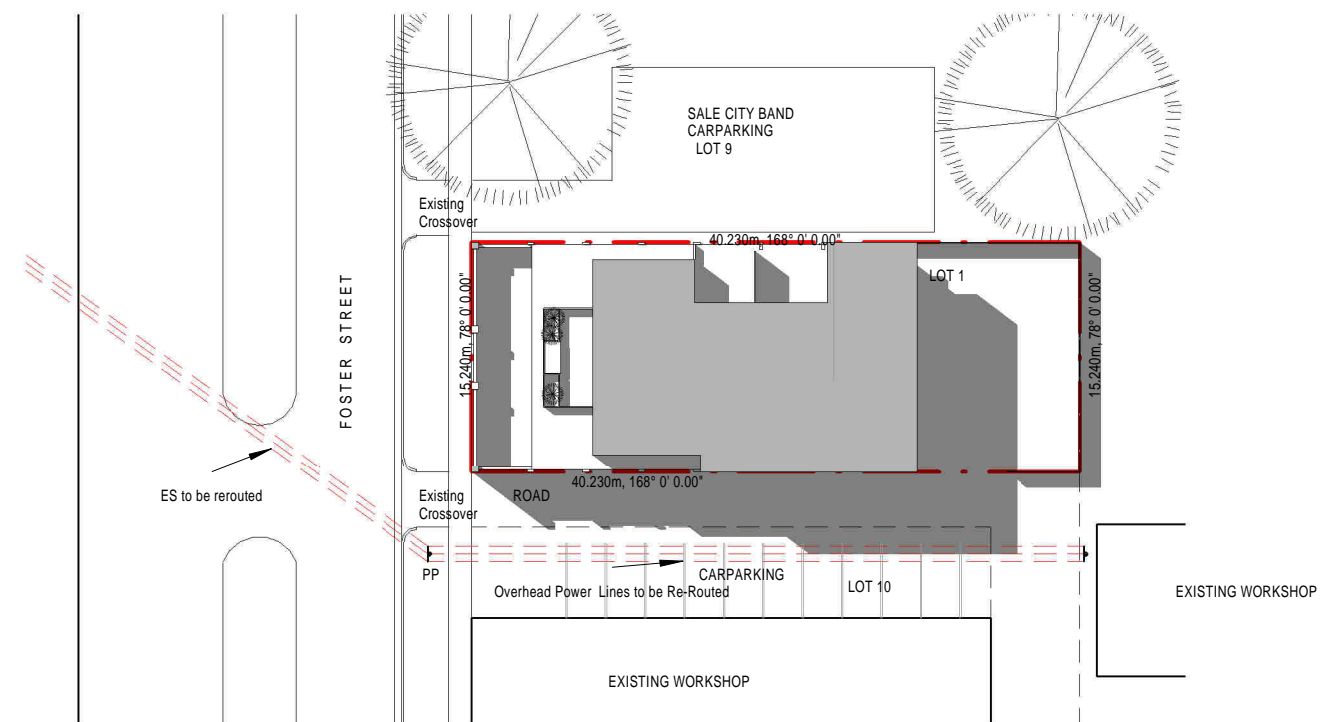
No.	Description	Date	<div>JBA</div> <div>John Briggs Architects and Heritage Consultant</div> <div>331A Bay Street, Port Melbourne</div> <div>Phone 9681 9924      Mobile 0411 228 515</div> <div>Fax 9681 9923</div>	<div>122-126 Foster Street</div> <div>TOWN PLANNING</div>	Site Images				<div>COPY RIGHT</div> <div>The concepts and information contained in this document are the intellectual property of John Briggs Architects Pty Ltd. Use or copying of the document, or application of the concepts, in whole or part without written permission of JBA constitutes an infringement of copyright.</div>			
					Project Status		<div>A101</div>					
					Date <div>Issue Date</div>							
					Drawn by	Author		Checked by		Checker		
					Sheet			of		Scale	1 : 50	Revision



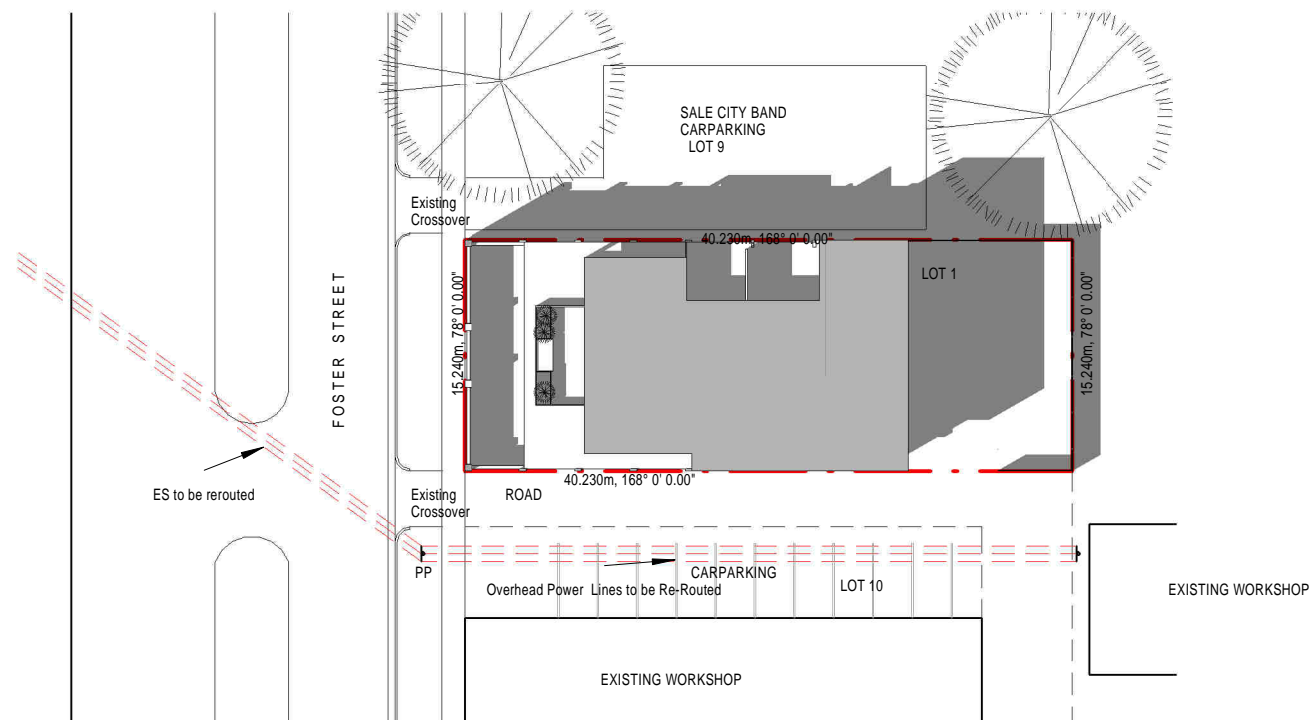




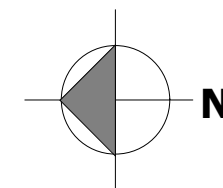
A103.1 1 : 500



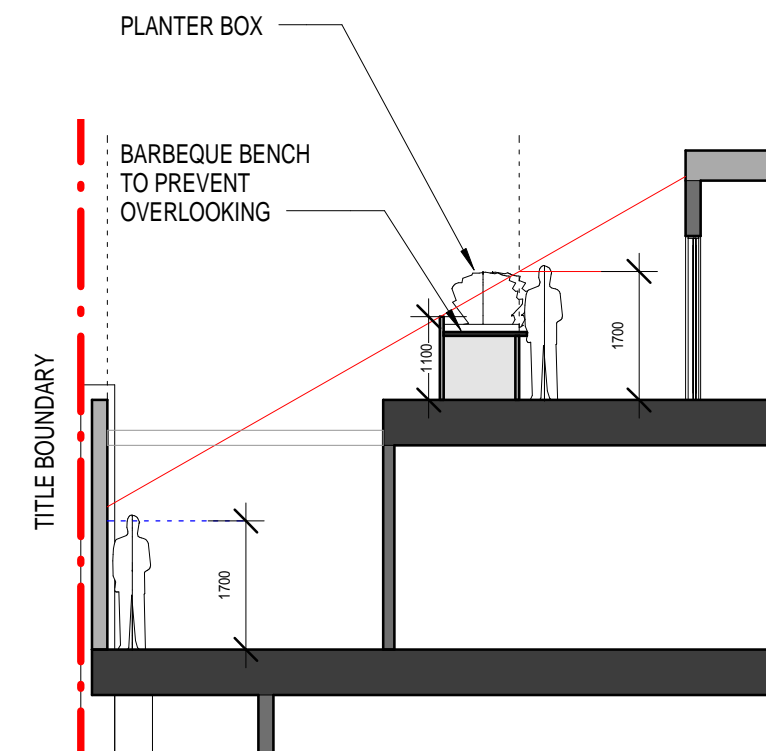
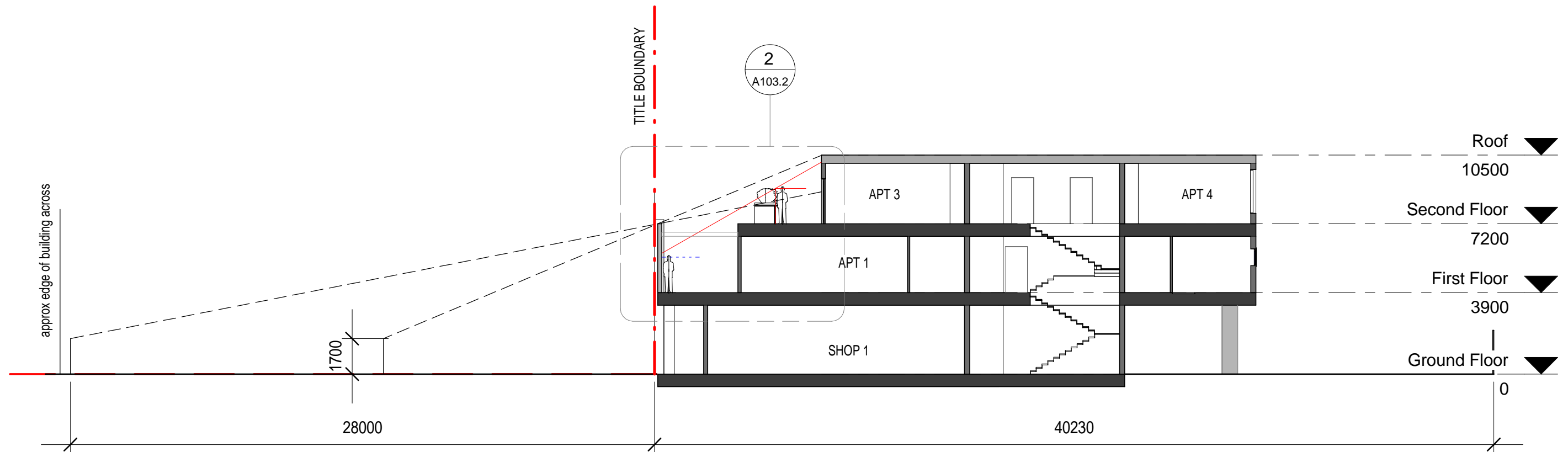
A103.1 1 : 500



A103.1 1 : 500



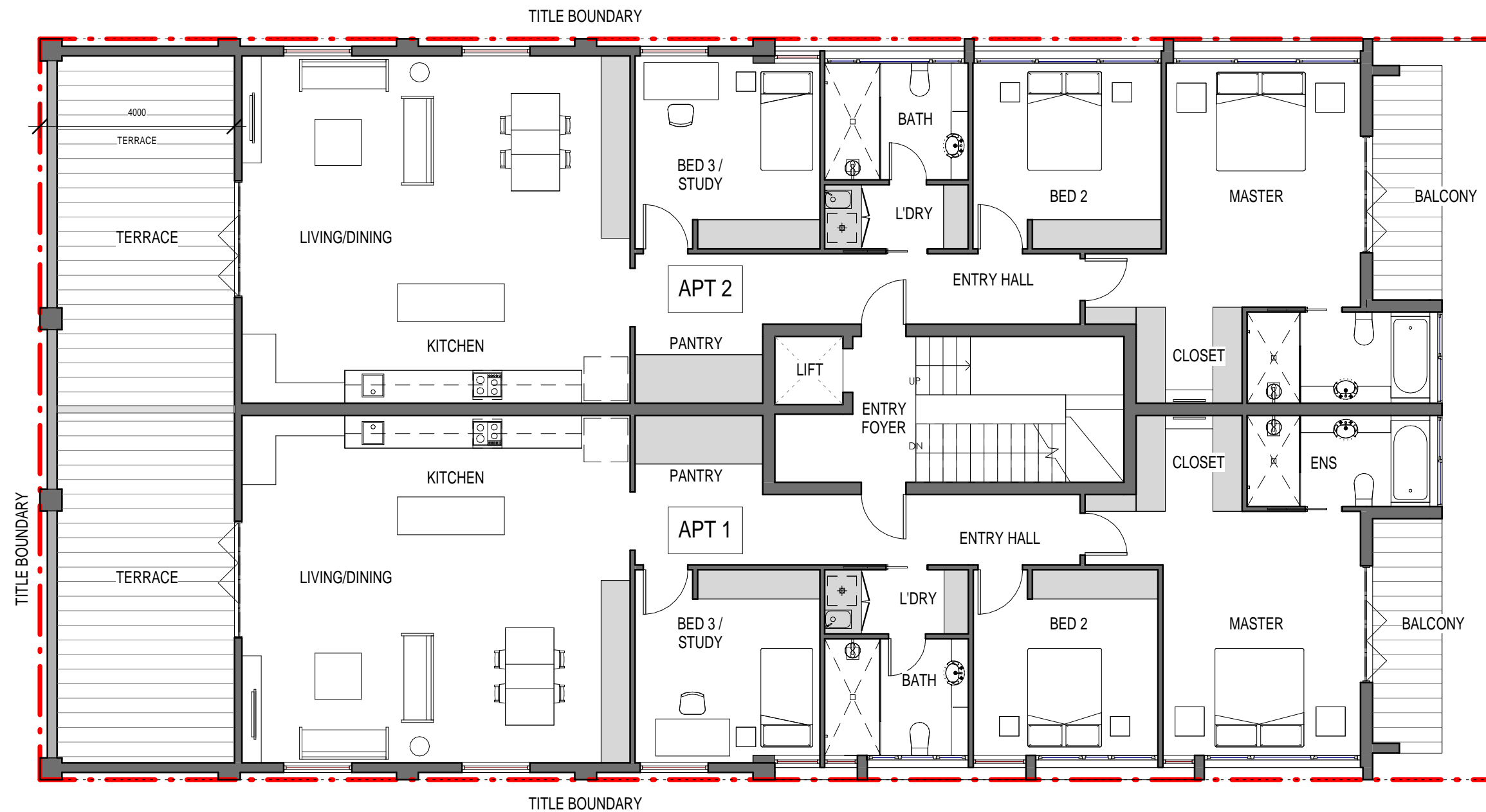




No.	Description	Date	<div><div>JBA</div><div>John Briggs Architects and Heritage Consultant</div><div>331A Bay Street, Port Melbourne</div><div>Phone 9681 9924      Mobile 0411 228 515</div><div>Fax 9681 9923</div></div>	<div>122-126 Foster Street</div> <div>TOWN PLANNING</div>	Sightline Diagram				<div>COPY RIGHT</div> <div>The concepts and information contained in this document are the intellectual property of John Briggs Architects Pty Ltd. Use or copying of the document, or application of the concepts, in whole or part without written permission of JBA constitutes an infringement of copyright.</div>		
					Project Status		A103.2				
					Date			Issue Date			
					Drawn by	Author		Checked by		Checker	
					Sheet			of		ScalAs indicated	Revision



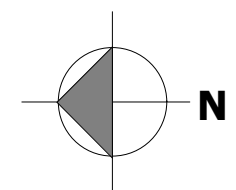




1 First Floor Plan

A105

1 : 100




No.	Description	Date	<b>JBA</b> <b>John Briggs Architects and Heritage Consultant</b> 331A Bay Street, Port Melbourne Phone 9681 9924                      Mobile 0411 228 515 Fax 9681 9923	122-126 Foster Street  TOWN PLANNING	First Floor Plan				COPY RIGHT The concepts and information contained in this document are the intellectual property of John Briggs Architects Pty Ltd. Use or copying of the document, or application of the concepts, in whole or part without written permission of JBA constitutes an infringement of copyright.		
					Project Status		A105				
					Date					Issue Date	
					Drawn by	Author				Checked by	Checker
					Sheet					of	
										Scale    1 : 100                      Revision	







A. FRONT BRICK FACADE -  
KRAUSE GRAMPIAN BLUE DARK  
BLEND




B. UPPER STOREY FRONT - ZINC  
PANEL / COLOUR QUARTZ




C. REAR FACADE - EQUITONE  
LINES  
FIBRE CEMENT PANEL



D. ALUMINIUM WINDOWS -  
OLD PEWTER

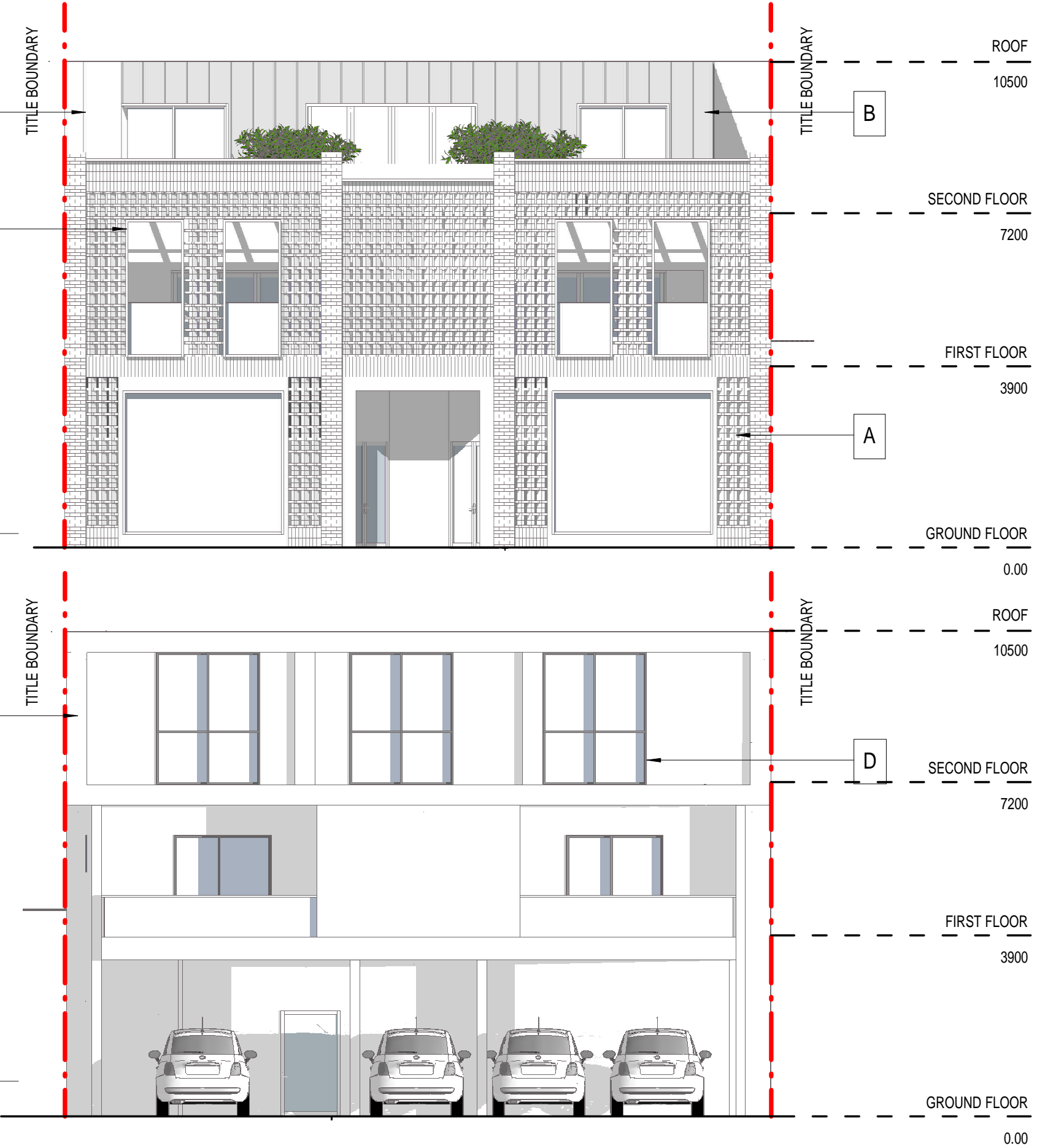


E. METAL SCREEN -  
IRONSTONE

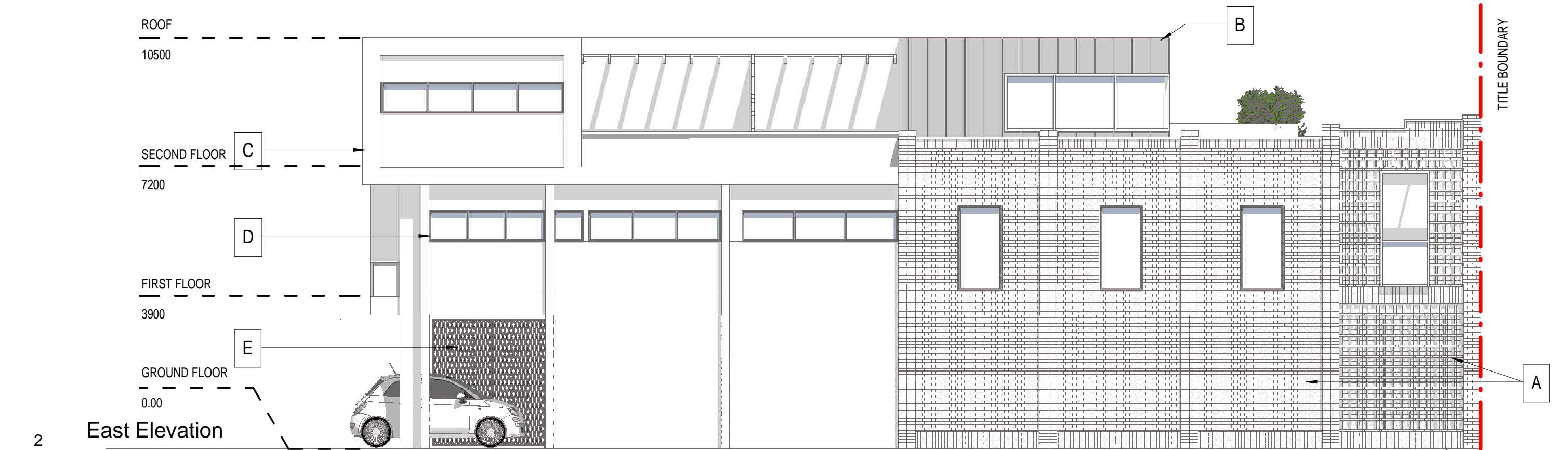


1 North Elevation  
A107 1 : 100

2 South Elevation  
A107 1 : 100



No.	Description	Date	<div><div>JBA</div><div>John Briggs Architects and Heritage Consultant</div><div>331A Bay Street, Port Melbourne</div><div>Phone 9681 9924      Mobile 0411 228 515</div><div>Fax 9681 9923</div></div> <div>122-126 Foster Street</div> <div>TOWN PLANNING</div>	Elevations				<div>COPY RIGHT</div> <div>The concepts and information contained in this document are the intellectual property of John Briggs Architects Pty Ltd. Use or copying of the document, or application of the concepts, in whole or part without written permission of JBA constitutes an infringement of copyright.</div>	
				Project Status		A107			
				Date					
				Drawn by	Author	Checked by	Checker		
				Sheet		of			



No.	Description	Date

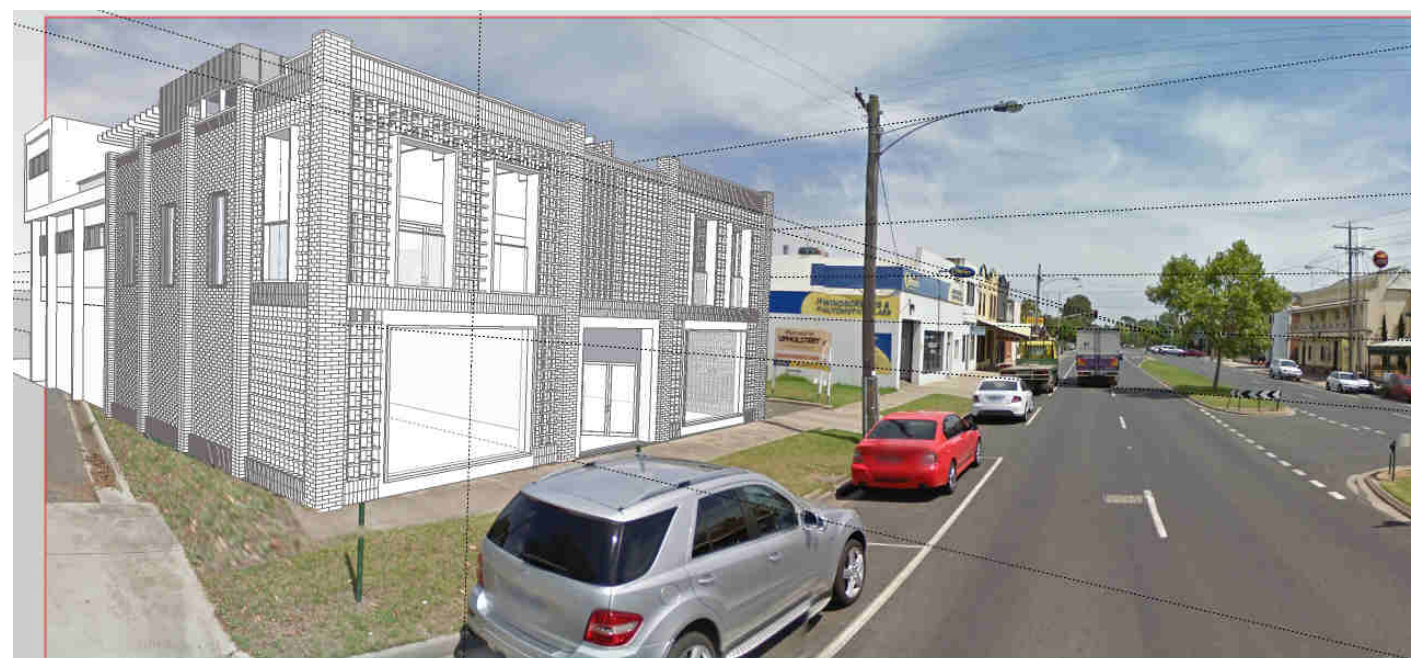
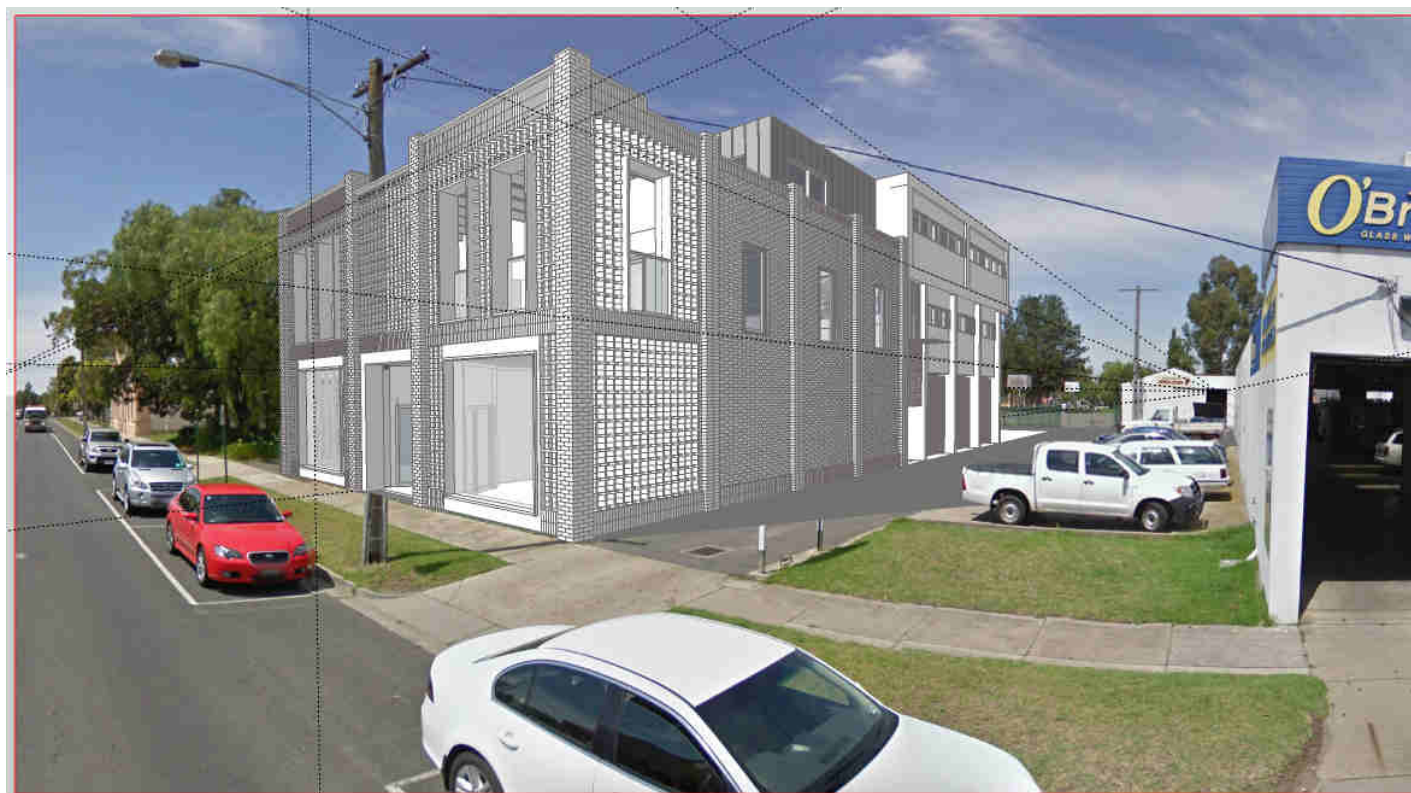
**JBA**  
John Briggs Architects and Heritage Consultant  
331A Bay Street, Port Melbourne  
Phone 9681 9924      Mobile 0411 228 515  
Fax 9681 9923

122-126 Foster Street  
TOWN PLANNING

Elevations						
Project Status				A108		
Date		Issue Date				
Drawn by	Author	Checked by	Checker			
Sheet	of					
				Scale	1 : 100	Revision

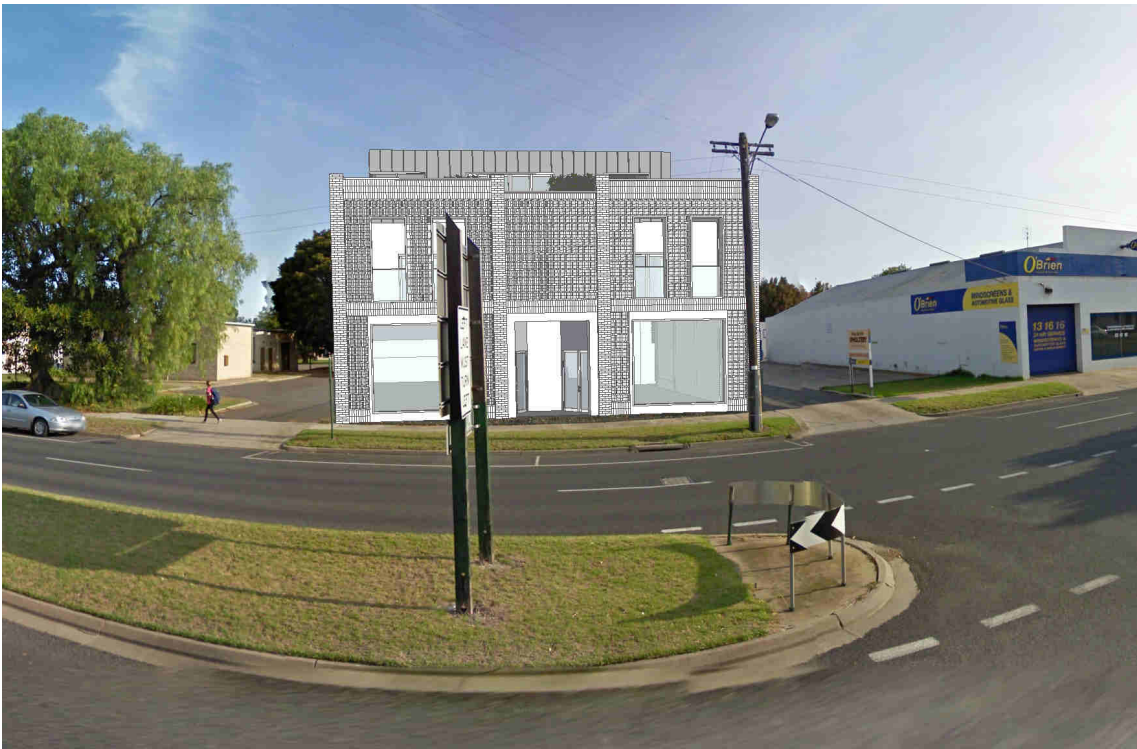
COPY RIGHT  
The concepts and information contained in this document are the intellectual property of John Briggs Architects Pty Ltd. Use or copying of the document, or application of the concepts, in whole or part without written permission of JBA constitutes an infringement of copyright.





No.	Description	Date	<div>JBA</div> <div>John Briggs Architects and Heritage Consultant</div> <div>331A Bay Street, Port Melbourne</div> <div>Phone 9681 9924      Mobile 0411 228 515</div> <div>Fax 9681 9923</div>	<div>122-126 Foster Street</div> <div>TOWN PLANNING</div>	Street Views				<div>COPY RIGHT</div> <div>The concepts and information contained in this document are the intellectual property of John Briggs Architects Pty Ltd. Use or copying of the document, or application of the concepts, in whole or part without written permission of JBA constitutes an infringement of copyright.</div>	
					Project Status		<div>A109</div> <div>Scale    1 : 100      Revision</div>			
					Date      Issue Date					
					Drawn by	Author		Checked by		Checker
					Sheet			of		





C. PROPOSED VIEW FROM ACROSS FOSTER ST



D. PROPOSED VIEW (WITH BUILDINGS ACROSS) - LOOKING EASTWARDS (FOSTER ST)



C. EXISTING VIEW FROM ACROSS FOSTER ST



D. EXISTING VIEW (WITH BUILDINGS ACROSS) - LOOKING EASTWARDS (FOSTER ST)

No.	Description	Date	<div><div>JBA</div><div>John Briggs Architects and Heritage Consultant</div><div>331A Bay Street, Port Melbourne</div><div>Phone 9681 9924      Mobile 0411 228 515</div><div>Fax 9681 9923</div></div>	<div>122-126 Foster Street</div> <div>TOWN PLANNING</div>	Street Views				<div>A110</div> <div>Scale   1 : 100      Revision</div>		<div>COPY RIGHT</div> <div>The concepts and information contained in this document are the intellectual property of John Briggs Architects Pty Ltd. Use or copying of the document, or application of the concepts, in whole or part without written permission of JBA constitutes an infringement of copyright.</div>			
					Project Status									
					Date		Issue Date							
					Drawn by	Author	Checked by	Checker						
					Sheet		of							





No.	Description	Date

**JBA**  
**John Briggs Architects and Heritage Consultant**  
331A Bay Street, Port Melbourne  
Phone 9681 9924      Mobile 0411 228 515  
Fax 9681 9923

122-126 Foster Street  
TOWN PLANNING

Perspectives					
Project Status			A111		
Date		Issue Date			
Drawn by	Author	Checked by			Checker
Sheet	of				
			Scale	1 : 200	Revision

**COPY RIGHT**  
The concepts and information contained in this document are the intellectual property of John Briggs Architects Pty Ltd. Use or copying of the document, or application of the concepts, in whole or part without written permission of JBA constitutes an infringement of copyright.